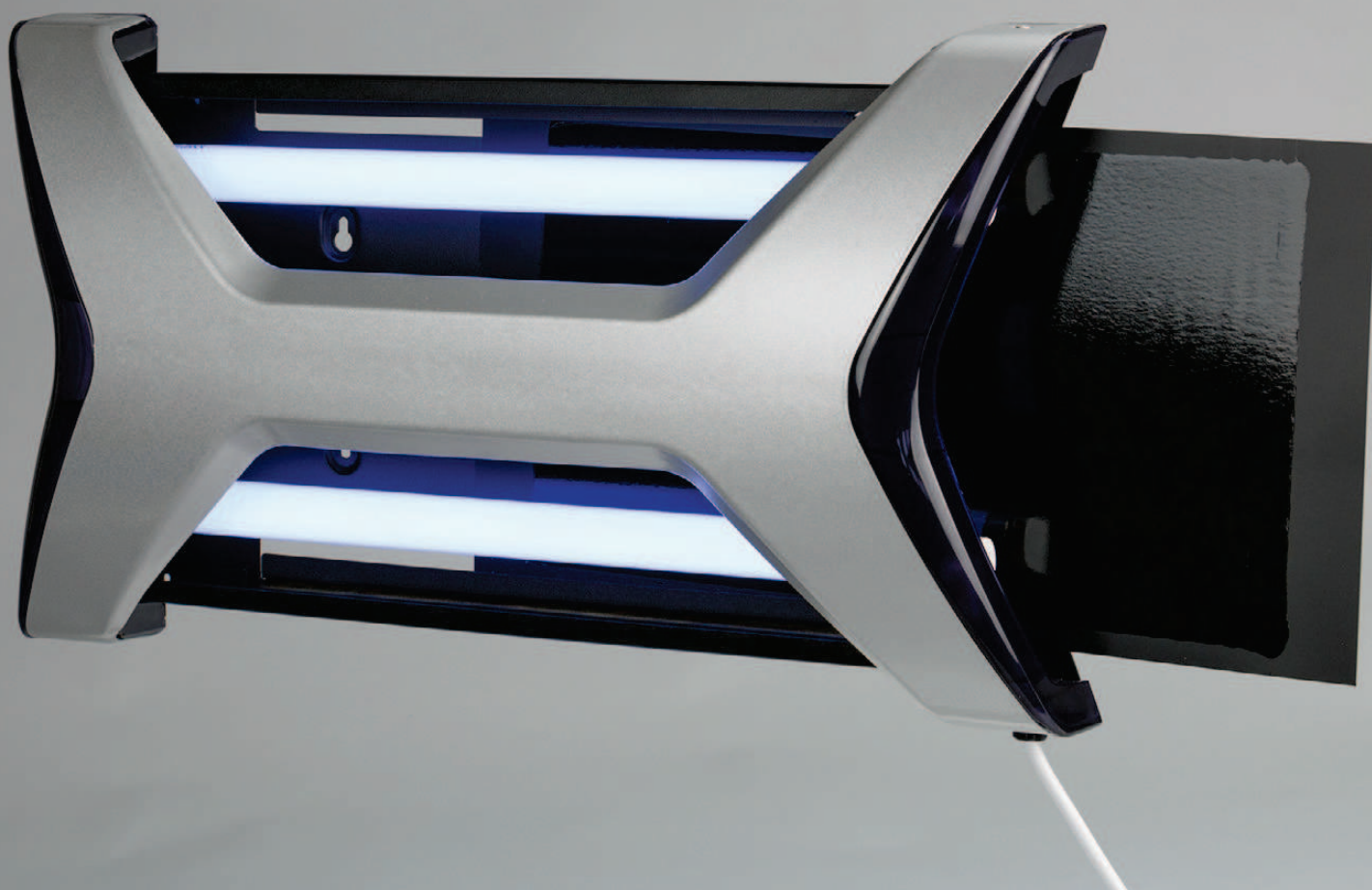




X-trap 50



*Metal wall mounting insect control unit suitable for trapping flying insects.
- Up to 80m² coverage by means of 2 powerful UV-A lamps -*

Key features:

- 2x 15W Philips UV-A shatterproof lamps
- Metal casing
- ISO 9001
- Holds a variety of glue board sizes
- Wall or ceiling mounting

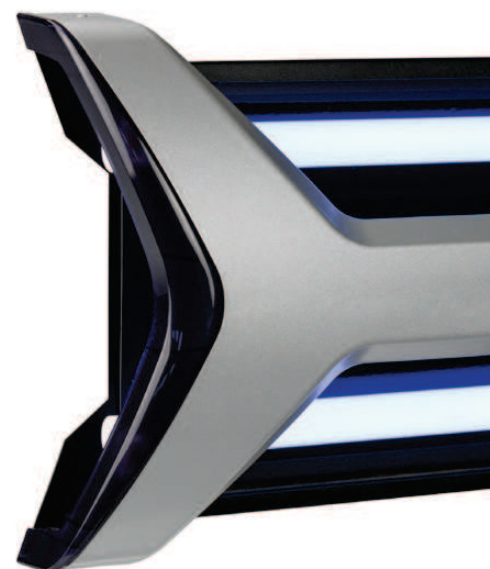




X-trap 50

*Metal wall mounting insect control unit suitable for trapping flying insects.
Up to 80m² coverage by means of 2 powerful UV-A lamps.*

- Highly effective due to front, side, top & bottom access for flying insects
- Unit can be mounted in 4 positions on the wall or on the ceiling
- Compact design, blends into the background
- Proven design offers a trouble free life time of min 5 years
- Unit can take a variety of glue boards, which allows for a trouble free switch
- CE approved offers sales opportunities around the globe
- Unique model, available exclusive
- Philips electronic ballast offers energy saving & 40.000 hrs
- Unit is HACCP compliant (2 x 15 watt Philips Shatterproof lamps)
- Easy to clean Front of House design & Industrial design

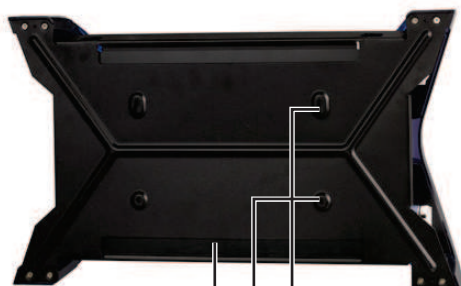


Markets

- Shops
- Offices
- Hotels
- Hospitals
- Food & Beverage
- Storage & Warehousing
- Pharma
- Restaurants
- Kitchens
- And many more..

Technical specifications

Electrical supply	220-240V ~ 50-60Hz
UV-A lamp	Philips branded
Ballast	Electronic, Philips 40.000 hrs
Standards	EMC / CE / RoHS / Reach compliant
Dimensions box	Indicative: 60 x 40 x 15 cm (L x W x H)
Gross weight	4,5 kg
Pallet volume	50 pieces
Pallet dimensions	120 x 80 x 210 cm (L x W x H)
Storage conditions	Dry conditions
Quality procedure	ISO 9001
Life span	Min 5 years
Consumables	Glue board and 15 watt UV-A lamp
Replacement interval	Annually: (min) 4 x Glue board & 2 x UV-A lamp
Appliance cable	3 pole cable of 1,7m with tailored country plug
Mounting position	Wall mounting in 4 directions or Ceiling mounting
Glue rail	Can hold a range of different sized boards
Environmental aspects	Non applicable
Marketing tools	Leaflet / photo's / banner / presentation
MSDS	Available for lamp and glue board



Upper holes are slot holes for easy horizontal mounting

Lower holes can ensure the reliable vertical mounting and ceiling mounting

Reinforcement ribs to ensure the stiffness of the back board

Companyname • Phone number • webaddress • email address