

The B & G 2200 Pressure Duster comes with a straight 8 foot PVC hose. The following chart lists most of the insecticidal dust formulations available to the pest control industry that can be propelled through the B&G 2200 Pressure Duster.

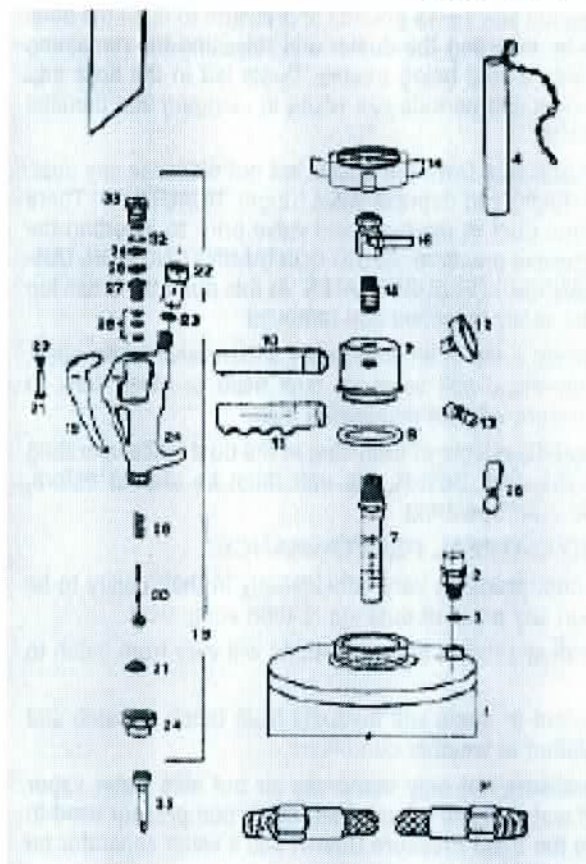
PRODUCT NAME	5 ACTIVE INGREDIENT(S)	8' STRAIGHT
Ficam D	1% Bendiocarb	OPTIMAL
Seven Dust	5% Carbaryl	OPTIMAL
Borid	99% Boric Acid	VERY GOOD
Drione	1% Pyrethrins 10% Piperonyl Butoxide 40% Silica Gel 49% Petroleum Distillate	
Dri-Die	95% Silica Gel	OPTIMAL
DPS	1% Diazinon 0.25% PYrethrins 10% Silica Gel	GOOD

* For optimal performance, keep tank pressure above 60 psi when dispensing these dusts formulation. *

MAINTENANCE

Use only dry dust and air. Do not exceed 100 psi at each time of filling. Be sure discharge is not clogged. Clean all dust from filler sealing surfaces to assure tight seal when attaching head assembly to tank opening.

PARTS LIST MODEL 2200 PRESSURE DUSTER



Key No.	Part No.	Description
1	2202	Tank (2 Gallon)
2	RV-2101	Relief Valve
3	RV-2101A	Relief Seal
4	LH-2102	Lug Handle Assembly
5	2120	Dust Scoop
6	2203	Discharge Assembly Complete
7	2212	Dip Tube
8	TG-2108	Tank Gasket
9	2204	Head Body
10	2209	Handle
11	2210	Handle Grip
12	G-2112	Gauge
13	AC-2113	Air Chuck
14	LR-2118	Lug Ring
15	2211	1/4" Hex Nipple
16	2208	Bell Valve
18	2206	Shut Off Valve Includes Items 19-34
19	VT-140	Valve Trigger
20	TS-141	Trigger Screw
21	SH-142	Screw Housing
22	SA-143	Stainer Adapter
23	NG-146	Nylon Gasket
24	VB-147	Valve Body
25	AS-148	Adjustment Screw
26	LN-149	Locknut
27	PN-150	Packing Nut
28	VP-151	Valve Packing-Teflon (3 per set)
29	9134-302SS	Spring
30	9032-1BRSS	Stem
31	SP-159	Soft Seal Gasket
32	SR-161	Snap Ring
33	SL-162	Safety Lock
34	1325	Cap
35	2205	Tip
36	2215	Valve Hanger
37	2216	Hose Unit



135 Region South Drive
Jackson, GA 30233
678-688-5601
Fax: 678-688-5633

Part Number: 95138354

Parts List and Operating Instructions

2200 PRESSURE DUST-R

INTRODUCTION

Insecticides formulated as dusts provide professional pest control operators with a very effective tool for treating voids both large and small. Unfortunately, dusts are probably the most difficult formulations of insecticides to apply correctly. Liquid formulations or those insecticides that are suspended in water or some other liquid medium have physical properties whereby they seek some common level. Dusts on the other hand, do not. It should also be noted that all dust formulations do not perform alike in application equipment. Some are more difficult to "move" through equipment than others.

OPERATION

FILLING AND PRESSURIZING:

- Make sure that tank, hose and valve are clean and dry.
- Use gloves and dust filter over nose and mouth when filling the 2200 Pressure Dust-R.
- Fill tank up to 1/2 full with dry dust.
- Make sure that the top of the collar on the tank and the rubber gasket on the head body are free from dust and debris to ensure an air-tight seal.
- Spin on brass lug ring and stoutly tighten with the lug wrench which is attached to tank by wire cable.
- The ball valve on top of the head body should be turned off (turned clockwise 1/4 turn) and that the safety locking screw on the valve is in the locked position (turned in the clockwise direction).
- Remove the cap from the air chuck located on the head body and pressurize the tank up to but not exceeding 100psi. (100 psi will dispense approximately 2-3 pounds of dust.)
- Replace the cap to the air chuck to prevent dust and debris from entering the air chuck (dust or dirt lodged in the air chuck can cause the air chuck to fail to seat properly resulting in pressure loss).
- The 2200 Pressure Dust-R is now ready for operation.

SAFE AND OPTIMAL PERFORMANCE:

!! ALWAYS FOLLOW INSTRUCTIONS ON CHEMICAL LABELS!!

!!NEVER POINT THE TIP OR VALVE AT FACE OR ANY OTHER PARTS OF THE BODY WHILE DUSTER IS PRESSURIZED!!

!! DUSTS ARE TO BE APPLIED AS A VERY THIN COATING TO SURFACES TOO MUCH DUST IS HIGHLY REPELLENT TO MOST INSECTS!!

NOTE: It is a good idea to practice using the 2200 Pressure Dust-R with some inert dust such as flour or baby powder whether using it for the first time or not. Fill the tank with 2-5 lbs. of inert dust while following the "Filling and Pressurization" instructions. Then follow the instructions for "Safe and Optimal Performance" above while operating the duster. It should be noted that flour is not the easiest type of dust to "move".

- Always keep ball valve on top of head body closed (turned clockwise 1/4 turn) when transporting pressurized duster.
- Always keep safety lock on valve body in locked position (turned fully clockwise) until ready to inject dust to prevent accidental release of contents.
- When completing an application using the 2200 Pressure Dust-R use the last 10-15 pounds of pressure to flush the hose and valve by inverting the duster and releasing the remaining pressure into a void being treated. Dusts left in the hose and valve for extended periods can result in clogging and damage to valve parts.
- To relieve pressure from the duster but not dispense any dust, invert the duster and depress valve trigger. **!!CAUTION!!** There will be some dust in the hose and valve prior to inverting the duster to relieve pressure. **AVOID CONTAMINATING NON-TARGET ORGANISMS OR SUBSTRATES.** At this point the brass lug ring can be safely loosened and removed.
- In the unlikely event of an emergency where valve sticks open, immediately close ball valve on tank head or invert tank to relieve pressure without dispensing dust.
- To decrease the effects of tunneling in the dust while operating the 2200 Pressure Dust-R, the unit must be shaken before, during and after operating.

SAFE AND OPTIMAL PERFORMANCE:

- Different dust products vary considerably in their ability to be propelled in any piece of dust application equipment
- Grades of dust carriers in formulations will vary from batch to batch.
- Water content of dusts will fluctuate from batch to batch and also in relation to weather conditions.
- Air compressors not only compress air but also water vapor into liquid water. Try to ensure that the air compressor used to pressurize the 2200 Pressure Dust-R has a water separator on it.

*** All of the above factors will affect the performance of your 2200 Pressure Dust-R.***