

# Non Pierce Roof Mount Components

## NET950



Base (X1)



Feet (X4)



Self drill screw (X10)

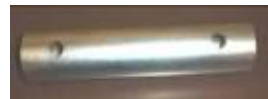


Plugs (X12)

## NET952 or NET953



Upright (X1)



Sleeve (X1)

## NET951



Leg (X4)

### You will also need:

Avifix

2 X 10mm spanners

Drill with 7mm socket

2 X 600mm square paving slabs

or 2 X 450mm paving slabs

Protective gloves are recommended for handling the fibreglass poles.

For information about installation angle options please refer to Network catalogue or [www.Networkbird.net](http://www.Networkbird.net)

# Non Pierce Roof Mount Installation Instructions



1. Place Base on roof



2. Apply Avifix inside metal components



3. Push legs/upright into position



600mm slabs – use steps 2 & 3. 450mm slabs slide feet on first then apply Avifix afterwards



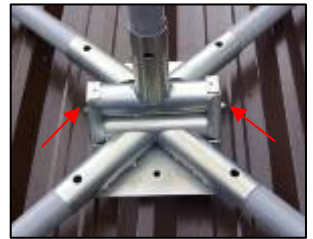
4. Line up holes



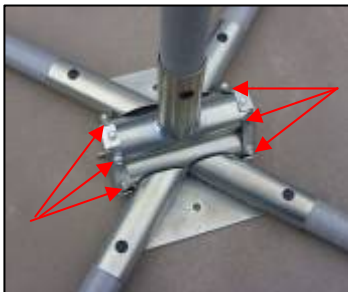
5. Add Avifix



6. Place plug in hole.



7. Check angles correct, tighten locking nuts



8. Fit self drill screws to both ends of each tube



9. Fit paving slabs



10. Fasten net support wire through holes at top of sleeve